

Retreats

Wedderburn Christian Campsite is the ideal location for a retreat.

Whether it is a church retreat, sporting association or community group, all guests will find our site both refreshing and relaxing.

With bunkhouse style accommodation to sleep up to 120, a large Main Hall/Dining Area, bush walks, beach volleyball court, sports oval, adventure activities on site and a 16m swimming pool; guests have variety to suit their needs for that special retreat.

Our friendly staff are also pleased to assist in your program, where required for activities, even for a night bushwalk and bonfire to make your retreat a memorable one.

Wedderburn Christian Campsite provides the following facilities:

All rooms are heated. Eleven rooms have ensuite facilities.

Main Hall/Dining Area large enough for 150.

Outdoor Stage Area with power supply.

Sporting facilities include an oval, beach volleyball court, archery, bush walks, rock climbing, adventure and initiative activities.

The Main Hall/Dining Area has a stage, white board, data projector and large screen and PA system – which are available upon request.



Outdoor/Educational/Recreational

ACTIVITIES

Wedderburn Christian Campsite can meet your needs of an educational and physical program.

Our staff can help add some variety to your program, or we can organise the whole program for you, tailor-made to suit your group's needs.

Our activities fall into one or more of these 3 categories:

E-Educational, R-Recreational, G-Group Building & Peer Support.

Initiative Games (G & R)

A variety of games that involve 100% teamwork, problem solving, communication and group skills. A circuit of four types of initiative games is usually provided.

2 Hour Bush Walk (Guided, with talks) (R & E)

The group is taken on a guided bush walk around various parts of the property. Numerous types of flora and fauna are pointed out, including "Bush Tuckerman's Food" (seasonal). This includes historical facts and other interesting pieces.

5 Hour Bush Walk (Guided, with talks) (R & E)

The group is taken off the property, visiting 2 beautiful (swimmable) waterholes. If we supply catering for the whole camp, a packed lunch will be provided for that day.

Bush Furniture (G & R)

This includes the group breaking into small teams to construct chairs and tables, etc... using only the branches, wood and stones lying around and some provided rope. Points are awarded for various factors involving teamwork, communication and end product.

Bush Crafts (R)

This is using mainly bush materials (nuts, leaves, etc...) to make jewellery, Christmas decorations, animals, etc ...

Archery (R)

This activity is presented in a safe and professional environment, ensuring the group gains maximum enjoyment.

BMX Bikes (R)

This activity is conducted on a BMX track on site and with professional organisation.



208 Minerva Road, Wedderburn NSW 2560
Phone: (02) 4634 1265 Fax: (02) 4634 1055
Email: office@wedderburn.org.au
Web: www.Wedderburn.org.au

Outdoor/Educational/Recreational

Mountain Bikes (R)

One of our new activities is mountain bike riding with organised rides on and off site.

Rock Climbing – “The Wall” (R)

“The Wall” is purpose built for climbing. It is run with trained instructors and safety equipment, and is aimed at all groups.

Abseiling (R)

All natural-cliff abseiling is done on site with a trained instructor(s). Especially aimed at beginners and intermediates, there are two sites – one of a 5m cliff face and the other of a 15m cliff face.

‘Enviro’ Adventures (E & R)

This session is designed to educate students in the flora and fauna seen around the property, but also in the larger world around us. The areas covered in this time range from water supplies and needs to emus and their habitat. There are many insects on display that the group can then visualize, as well as ‘handle’ – with many other species being set in resin (a clear substance). A brief talk is given about certain flora and fauna, and then the group is taken on a short walk on the property, which includes details and information shown and told to them. A worksheet is also supplied for the children to complete at the end of the session, or back at school.

Other Sports Equipment

A 16m swimming pool – with ‘wrestle pole’ in the middle; beach volleyball facilities; table tennis; basketball hoop (no court); cricket equipment; football/soccer equipment.

ACTIVITY STATEMENT

Participation in these activities will always have an element of risk, inconvenience and uncertainty. All programs and activities are carefully designed to be proportional to the skills of the individual and the group, therefore ensuring that no one will be forced to exceed personal limits. In this way, each individual can experience success.

Wedderburn Christian Campsite offers each participant the choice to try a potentially difficult and/or frightening challenge in an atmosphere of support and caring, while respecting individual ideas and choices.

Not all participants will wish to attempt all activities. This, of course, is respected and expected, however those who choose to partake in the activity will be given all the necessary support and encouragement in a safe environment.

If you have any queries or concerns regarding the nature of the activities, programs or equipment, or would like more information regarding our safety standards and procedures, then please contact us.



208 Minerva Road, Wedderburn NSW 2560
Phone: (02) 4634 1265 Fax: (02) 4634 1055
Email: office@wedderburn.org.au
Web: www.Wedderburn.org.au

Travel Directions

SYDNEY – CAMPSITE

Here are the details:

- Follow the M5 to the 2nd Campbelltown Exit, which is Narellan Road – take this exit then turn left and gradually merge to the right hand lane.
- A few km's down Narellan Road, you will come to a set of lights – Appin Road (also known as Moore-Oxley Road) – **turn right** at these lights.
- Follow Appin Road till you come to Woodlands Road (3rd set of lights) – **turn left**.
- Follow Woodlands Rd to the end – **turn right** onto Wedderburn Road (it is called Karrabul Road for about 50 meters, then changes to Wedderburn Rd).
- Follow Wedderburn Rd to the end – you will go through a gorge and come into bushland – **turn right** onto Minerva Road.
- From this intersection, we are 2km on the right hand side. We have signage at our driveway. The driveway winds for about 700m till you get down to camp.

WOLLONGONG – CAMPSITE

Here are the details:

- Follow Appin Road into Appin and towards Campbelltown.
- Once approaching Campbelltown, you will go through two roundabouts.
- At the 1st set of traffic lights, after the 2 roundabouts, is Woodlands Road – turn right.
- Follow Woodlands Rd to the end – turn right onto Wedderburn Road (it is called Karrabul Road for about 50 meters, then changes to Wedderburn Rd).
- Follow Wedderburn Rd to the end – you will go through a gorge and come into bushland – turn right onto Minerva Road.

From this intersection, we are 2km on the right hand side. We have signage on both sides of the road at our driveway. The driveway winds for about 700m till you get down to camp.



208 Minerva Road, Wedderburn NSW 2560
Phone: (02) 4634 1265 Fax: (02) 4634 1055
Email: office@wedderburn.org.au
Web: www.Wedderburn.org.au

Rates

WEEKEND RATES

Cost of a weekend is from Friday night to Sunday afternoon.

*** Fully- Catered Option See attached quote for prices/person**

Meals included are from Friday night Supper to Sunday Lunch, including all morning and afternoon teas, plus all dishwashing and cleaning of kitchen and hall.

*** Self-Catered Option. See attached quote for prices/person**

PLUS a fee of \$200.00 per day / per group for use of kitchen equipment. Self-catered groups must bring all food supplies, food wrap and dishwashing detergent. Self Catering groups are also required to clean the facilities, utensils, kitchen and leave the grounds free from litter.

It is the responsibility of Self Catered groups to abide by all Safe Food Handling/Hygiene requirements as set out in the *Food Act 2003 No.43*.

Additional Information:

Day visitors and Activity prices see attached quote for prices/person

Arrival time is on Friday after 5pm and departure time is Sunday before 3pm.

Note: Our minimum number is 40 people paying the full rate.

Accommodation Fee Includes:

Swimming pool, beach volleyball, free use of sports equipment, Overhead Projector (OHP), Data Projector, Public Address System (PA), whiteboard, beds, pillows, amenities, toilet paper, cutlery and crockery.

Please Bring:

First Aid Kit, bedding (extra blankets, doona, sleeping bag, pillow slip, etc...), sunblock, hat, toiletries and insect repellent.

Site Visits are welcome with prior arrangement with the Management

Prices are subject to change

SITE MAP

**Black
Cockatoo
Cabin**

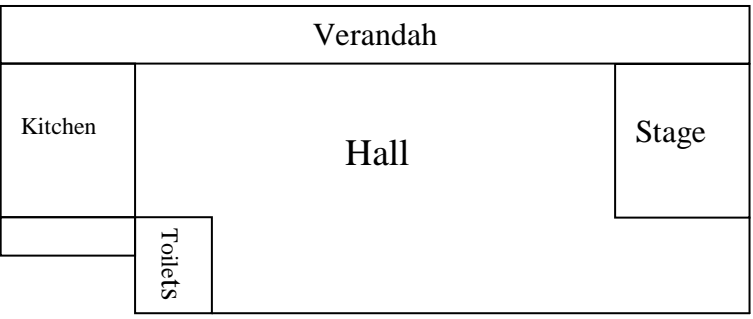
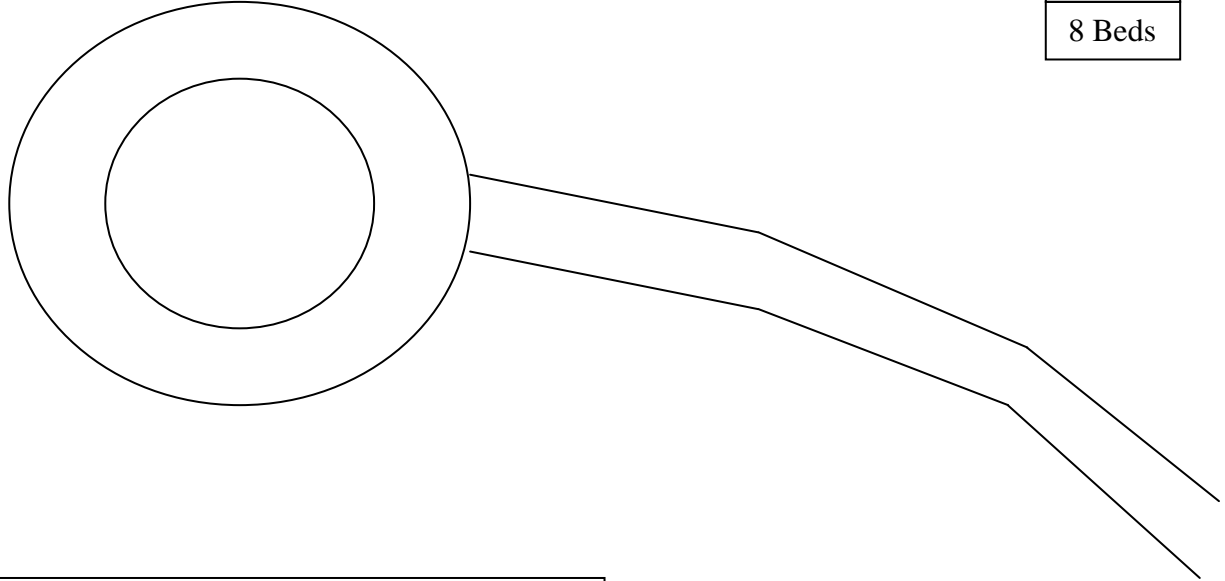
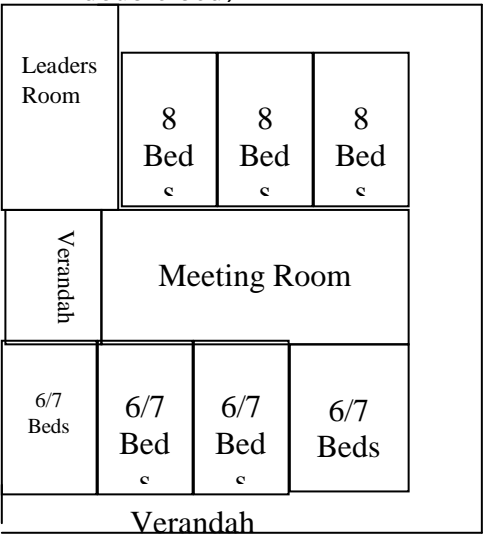
8 Beds	Ensuites
8 Beds	
8 Beds	
8 Beds	

Amenities Block

**Rosella
Cabin**

8 Beds
8 Beds
8 Beds
8 Beds

Homestead
(7 ensuite rooms-
6/7 incl. one
double bed)



208 Minerva Road, Wedderburn NSW 2560
 Phone: (02) 4634 1265 Fax: (02) 4634 1055
 Email: office@wedderburn.org.au
 Web: www.Wedderburn.org.au