



WEDDERBURN CHRISTIAN CAMPSITE

Retreat Information Pack



Wedderburn Christian Campsite is the ideal location for your next retreat. Whether it is a church retreat, sporting association, or community group, all guests will find our site both refreshing and relaxing.

The majority of our camps booked are via 'word of mouth' and 'repeat bookings', this in itself is testimony to our professional and flexible approach to camps.



Flexible Programming

Here at Wedderburn Christian Campsite, we run a vast array of programs catering to all sorts of groups varied in size and purpose. Within this Info Pack, you'll find information on our rates, quotes, and a sample program.

Wedderburn Christian Campsite staff can supervise and coordinate the day's program from **BREAKFAST TO BED**. This allows flexibility for your group to mingle and have some time for much-needed R&R. However, those services come at an additional cost. Alternatively, your group can choose to do it all yourselves.

Our beautiful bush property!

Our 136 acre property boasts of dense Australian bushland, thriving wildlife, peaceful views, and awe-inspiring bushwalking tracks winding throughout. Nestled within this landscape, you'll find all our main accommodation (including our much loved, heritage-listed 'Homestead'), our main Recreation/Dining Hall, our Outback Shed, our Bush Chapel, and our Outdoor Stage.

With bunkhouse style accommodation to sleep up to 144, a large Main Hall/Dining Area, bush walks, beach volleyball court, sports oval, adventure activities on site, and a 16m swimming pool, guests have variety to suit their needs for that special retreat.

Not to be forgotten - our fun, thrill-seeking activities are also speckled throughout our wonderful property! Zip down our flying-fox, fire arrows at our large archery targets, scale up our vertical challenge, or fly out over a cliff on our giant swing. The sky is the limit!



Accommodation & Facilities

Wedderburn Christian Campsite is well suited to meet most groups' accommodation needs. We have a total of 144 beds in cabin style accommodation with the option of an additional 16 beds in our Homestead Hall.

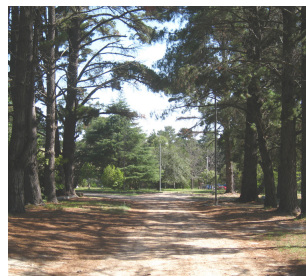
HOMESTEAD, BLACK COCKATOO, AND ROSELLA CABIN ACCOMMODATION

In our historic 'Homestead' and 'Black Cockatoo' cabins, we have 11 rooms featuring private ensuites, sleeping 88 people. Four of those ensuite rooms are equipped with double beds.

The 'Rosella' cabin block contains 4 rooms, each with 5 bunk beds and is serviced by an adjacent amenities block.

BUSH CAMPING

If roughing it is more your style, why not try our bush campout program? Learn how to put up a tent, build a fire, make billy tea, and cook your own dinner on an open fire!





Accommodation & Facilities

continued...

MEETING ROOMS

The Homestead contains 2 meeting rooms. Our 'Studio Room' and our 'Leaders Retreat'.

The '**Studio Room**' is perfectly suited to small groups, seating up to 45 people comfortably.

The '**Leaders Retreat**' room is where teachers and leaders alike may take time out for refreshment and relaxation away from campers. This room's facilities include tea/coffee making, fridge, dining table, lounge area, and pot belly stove for those cold winter months.

DINING HALL

Seating up to 200, our recreation and dining hall is a flexible space for dining, games, and seminars. Food from our commercial kitchen is served here. We pride ourselves in good food and plenty of it!

OTHER FACILITIES

The '**Bush Chapel**' is a great place to tell a story, conduct a debrief after a tough activity, or simply relax and gaze into the bushland surrounds.

The '**Outback Shed**' is a large sheltered pergola area with an adjoining indoor space. It is fitted out with its own amenities, bbq/bonfire features, kitchenette, and an 'Eco Room'.

The '**Outdoor Stage**' situated near the pool has been used for concerts, dramas, and battle of the band's nights. It is equipped with a power source close by and the option of lighting for night shows.

The '**Swimming Pool**' is a wonderful oasis from the heat in summer, coming as a free activity with the hire of the site, you will find our pool and wrestling pole setup a hit with the kids!

The '**Beach Volleyball**' court is great for a social game or a slightly more serious match. It's also a great place for young kids to build sandcastles!





Sample Program



SAMPLE WEEKEND PROGRAM

PROGRAM	
DAY 1	07:00pm – Arrive/Site induction/Set up 07:30pm – Supper & Chat time
PROGRAM	
DAY 2	08:00am – Rise & Shine 08:30am – Breakfast 09:30am – Activity session/Seminar 11:30am – Morning Tea 11:15am – Activity session/Seminar 12:45pm – Lunch 01:45pm – Free time 03:30pm – Afternoon Tea 04:00pm – Activity session/Seminar 05:30pm – Free time/Showers 06:00pm – Dinner 07:30pm – Night Program

PROGRAM	
DAY 3	07:00am – Rise & Shine 08:00am – Breakfast 09:00am – Pack up rooms 09:45am – Activity session/Seminar 10:15am – Morning Tea 11:00am – Free time 12:00pm – Lunch 02:30pm – Farewell from Wedderburn

WET WEATHER CONTINGENCY PLAN	
In the event of wet weather, an action plan will be devised in conjunction with teachers depending on the severity of the weather. Our action plan includes:	
<ol style="list-style-type: none"> 1. Assessment of weather risk to students 2. Lightning will mean ceasing outdoor activities 3. Adjusting the program times to suit weather 4. Make shift raincoats for students who forget them 5. Changing to a different activity if it cannot continue safely in the rain 6. Organised indoor games 7. Movies are available as a 'Plan B' 	

We will customise your program to suit your specific requirements!

"We love working with WCC! They provide our kids and staff with an incredibly fun, flexible, professional, and safe camp experience. I highly recommend them"

*Amanda,
Community Liaison Officer at Thomas Aces,
Ambarvale, and Rosemeadow Public Schools*



Activities

Our activities fall into one or more of these 3 categories

E- Educational, R- Recreational, G-Group Building & Peer Support

Rockwall (R&G) - Our purpose-built wall is run by trained instructors; you will climb to the top of our 6m walls using a safety harness, 11m static rope, and 3 other people as your belay team. This is a great activity to promote teamwork.

Flying Fox (R) - Zip down our 50m flying fox, traveling through the treetops, and over our green gully (max weight 120kg).

Initiative Games (G&E) - Fun, yet challenging games & scenarios where campers learn teamwork, problem-solving, communication, and leadership. After each game, our insightful staff will analyse their performance & debrief each activity.

Archery (R) - Our Archery shed includes modern bows, large targets, and a shaded firing range. Our instructors promote a safe environment, many turns, and ensure that each camper's attempt will be a real hit!

BMX (R) - Using our very own dirt BMX track, the campers take turns riding, jumping, spinning, and sliding their way through our track.

Bush Creations (E&R) - Experience what it is like to work together to create a project using only bush materials.

Bush Craft (E&R) - Using general craft and natural bush materials such as nuts, leaves, and pine cones, let the campers' imaginations run wild. From nature collages to name plaques and beading to bush wind chimes, the possibilities are endless!





continued...

Vertical Challenge (R&G) - Fitted out with a harness, helmet, and the help of their 3 person belay team, campers scale their way up our 12m vertical obstacle course! Consisting of hanging tyres, horizontally and vertically stacked caterpillar logs, and much more, this activity is both a fun and challenging feat!

H2O Skirmish (R&G) - If getting a little wet and dirty is your idea of fun, H2O Skirmish is for you! Taking place on a real skirmish site in our pine forest, this activity consists of games like capture the flag, last man standing, and save the maiden.

Laser Tag (R&G) - Real taggers, real skirmish site, real fun, and none of this getting wet business.

Off Track Experience (E&G) - You will get off the beaten track, and put to practice skills in orienteering, teamwork, and leadership. You will find this activity a great nature and team-building experience.

Abseiling (R) - Conducted on a natural cliff, our 2 sites involve a controlled descent down into the valley. Offering a 6m and a 20m site, our instructors will encourage your group to push themselves to the limit, gain a new sense of achievement and experience.

Giant Swing (R) - Our 15m swing will really test your screaming levels, swinging you out over a cliff to enjoy the view of the Georges River, the escarpment, and the valley down below. How will your nerves cope?

Mountain Biking (R) - This guided ride will help you explore our beautiful bushland setting on one of our mountain bikes. Only a basic riding level is needed.

Campfire Cooking (E & R) - Have a traditional camp experience and learn to cook a meal over an open fire.





continued...

Leap of Faith (R&G) - Campers climb up an 11-meter pole to reach a platform. Soak up the treetop views, take a deep breath, and make a leap of faith off the platform reaching out for a hanging ball.

Tree Climb (R&G) - Experience what it is like to be a koala as you climb into the treetops of some of our large gum trees and soak up the view from a platform at the top!

Glider Possum (R&G) - With a rope attached to your back and in a full-body harness, you are hauled up into the air by your friends, giving you a great flying sensation with nothing to hang on to! (*can't be run in the same session as leap of faith or crate climb)

Crate Climb (R&G) - Put your balance, agility, and coordination to the test by building a tower of crates, climbing them as you build, as high as you dare.

Koala Conservation Experience (E) - Learn all about our wonderful, Native Australian favourite, the Koala. You might even find one!

Eco Adventure (E) - Based on the school syllabus, our Eco Adventure is a guided bushwalk investigating water catchment, native flora, habitats, survival awareness, invertebrates, and pollution, giving you a real taste of our natural bushland. *WCC also offers a more in-depth ecological activity for those looking to do a deep dive alongside the curriculum. See website for more details.*

Night Program (E, R, & G) - Our night programs vary depending on your preferences each day! Any given night could typically consist of either a campfire, night bushwalk, mega trivia, mini Olympics, or a movie.





Site Map



Site Visits are welcome with prior arrangement with Management.



Activity Statement

Participation in these activities will always have an element of risk, inconvenience and uncertainty. All programs and activities are carefully designed to be proportional to the skills of the individual and the group, therefore ensuring that no one will be forced to exceed personal limits. In this way, each individual can experience success.

Wedderburn Christian Campsite offers each participant the choice to try a potentially difficult and/or frightening challenge in an atmosphere of support and care while respecting individual ideas and choices. Not all participants will wish to attempt all activities. This, of course, is respected and expected, however, those who choose to partake in the activity will be given all the necessary support and encouragement in a safe environment. If you have any queries or concerns regarding the nature of the activities, programs, equipment, or would like more information regarding our safety standards and procedures, please contact us.

Safety Statement & Risk Assessment

Wedderburn Christian Campsite is an organisation committed to providing a safe environment for all participants in its outdoor programs. Wedderburn Christian Campsite recognises the importance of ensuring our staff maintain appropriate levels of training and skills.

STAFF QUALIFICATIONS & EXPERIENCE

All Wedderburn Christian Campsite staff are required to undertake a selection process comprising of a written application, face-to-face interview, and where appropriate, visual assessment of skills. All staff responsible for the supervision of minors are 18 years and over. Outdoor staff have appropriate experience and qualifications to conduct the activities for which they are responsible. All Wedderburn Christian Campsite camping and outdoor staff undertake regular training to update/maintain their activity skills, in accordance with accepted industry practice.



Safety Statement & Risk Assessment

continued...

MANDATORY STANDARDS IN OUTDOOR RECREATION

There are no mandatory standards for the conducting of outdoor recreation in Australia. However, a range of guidelines exist for those working with people in the outdoors.

These include:

- NSW Department of Education – Guidelines for School Excursions
- Catholic Education Commission School Safety Guidelines
- ‘The Risk Management Document’ – developed by The Outdoor Recreation Industry Council of NSW
- National Training Package for Outdoor Recreation – developed by Sport & Recreation Training, Australia

All Wedderburn Christian Campsite’s Safe Operating Procedures and activity curricula have been developed with reference to these documents. Wedderburn Christian Campsite maintains appropriate numbers of first aid qualified and experienced leaders on all camps.

STAFF CONDUCT

Wedderburn Christian Campsite recognises that it has a duty of care to participants in its outdoor programs and camps. Wedderburn Christian Campsite, therefore, is committed to providing all participants with – appropriate instruction prior to commencing activities; appropriately maintained and checked equipment, and ongoing supervision and diagnostic instruction during activities. When working with minors, Wedderburn Christian Campsite recognises the unpredictable nature of children and their reduced capacity to identify potentially dangerous situations, and structures activities to cater for these. All Wedderburn Christian Campsite staff involved in working with children have been appropriately screened and approved, in accordance with the Child Protection (Prohibited Employment) Act 1998.

EVALUATION & REVIEW

All Wedderburn Christian Campsite outdoor programs and camps complete an evaluation procedure. This process includes written evaluations from participants (teachers on school camps). The content of these evaluations forms the basis for any changes to future programming.



Rates

You can find a current price guide attached to this information pack as well as on [our website](#). Please contact our office for a full quote and program to suit your specific needs.

Prices are subject to change.

Pro Campo is a not-for-profit organisation.

Accommodation Fee Includes:

Swimming pool, beach volleyball, basketball ½ court, free use of sports equipment, data projector, small public address system (PA), whiteboard, beds, pillows, amenities, detergent, toilet paper, cutlery, and crockery.

Please Bring:

First Aid Kit (Appropriately sized), bedding (sleeping bag or doona, sheets, pillow slip), towel, sunblock, hat, torch, toiletries, and insect repellent.

Bookings

To secure a booking, please call or email our office and we will gladly give you a quote and program to suit your needs. Once initial contact has been made, you will receive the information via email. We hold tentative dates for a period of 2 weeks in which you have time to make your booking (Extensions may be granted upon request). To complete your booking you will need to finalise your booking paperwork and pay the deposit. All of this information will be given to you at the time of receiving your quote.

We look forward to
hosting you!

We will always continue to use Wedderburn Christian Campsite. The staff are highly trained, respectful, and encouraging!

*Simon,
Rosemeadow Public School*